

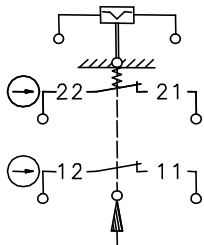
Safety switch Series SGS

Description **SGS-SA2Z AK F3 230V**

Article number **6110888019**

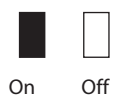
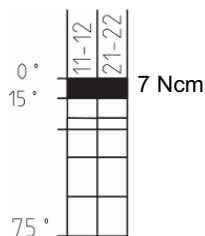
Operating symbol

Termination electromagnet
with contact position

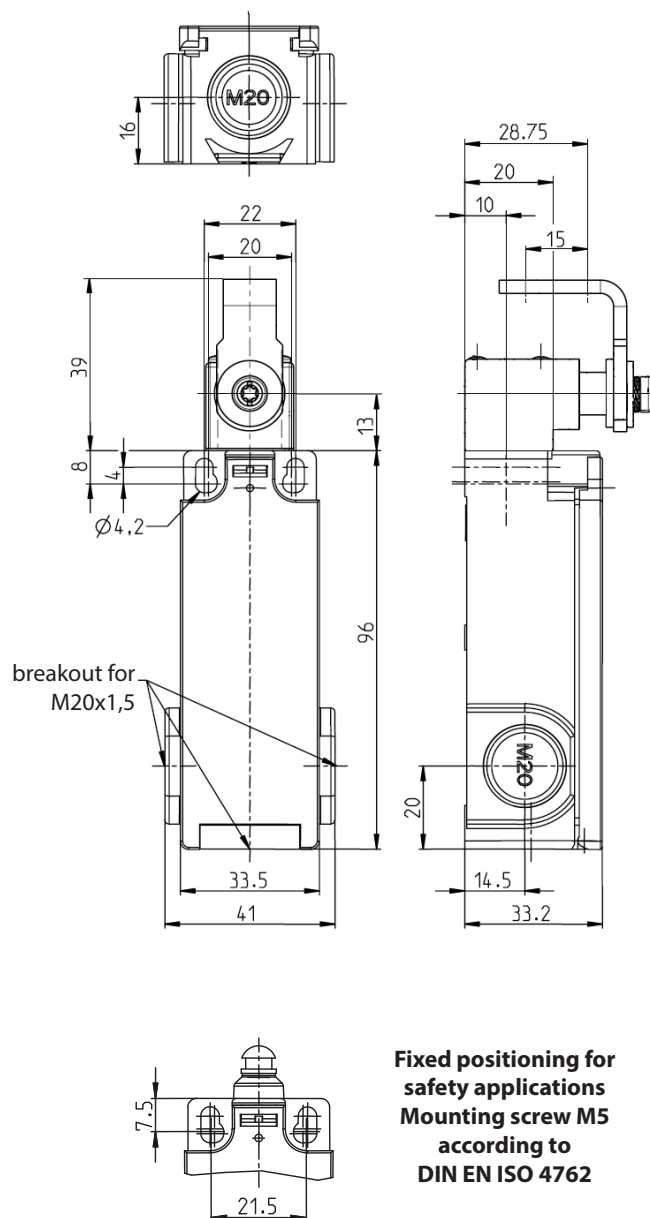


Operating diagram

(Return by E-magnet)



Tolerances:
Operating point $\pm 3,5^\circ$;
Operating force $\pm 30\%$



Elektrische Daten		
Electrical data		II, totally insulated
Protection class		
Contact elements	U _i	250 V AC
Rated insulation voltage	I _{the}	10 A
Conv. thermal current	AC-15, U _e /I _e 240 V / 3 A	
Utilization category	DC-13, U _e /I _e 250 V / 0,27 A	
Min. Voltage	24 V	
Min. Current	5 mA	
Direct opening action	⊙	according to IEC/EN 60947-5-1, Annex K
Short-circuit protective device	Fuse 4 A gG	
Electro magnets		with recovery diode
Temperature class		B (130 °C)
Rated operational voltage	U _e	230 V AC -15 % / +10 %
Rated operational current	I _e	0,23 A -15 %
On-Time	ED	3 %
Min. On-Time	T _i	0,2 s
Max. On-Time	T _e	0,5 s
Min. Off-Time	T _n	17 s

Mechanical data		
Enclosure	Thermoplastic GV self-extinguishing	
Cover	Thermoplastic GV self-extinguishing	
Actuating	Lever arm housing, lever (st)	
Velocity for actuating	V_{max}	0,5m/s
Ambient air temperature	-25 °C ... +50 °C	
Contact type	2 NC (Zb)	
Switching principle	Magnetic snap action, bistable	
Mechanical life	5 x 10 ⁴ operating cycles	
Assembly	2 x M4 / 2 x M5 for safety applications	
Connection - contact elements	4 screw terminals (M3,5)	
Conductor cross-sections	Solid: 0,5 ... 1,5 mm ²	
	Litz wire with ferrules: 0,5 ... 1,5 mm ²	
Connection - Electro magnets	2x butt connector similar to DIN 46341	
	(crushing zone 0,5 – 1,5 mm ²)	
Cable entrance	3x M20x1,5 breakout, left, right and upside	
Installation position	Operator definable	
Contact opening	4 x >2 mm	
Protection type	IP65 acc. to IEC/EN 60529	

Anfahrmöglichkeiten

By loosening the 4 screws the actuation assembly can be rotated in 90 degree increments such that 4 actuation directions are possible. The actuation assembly is to be again fastened to the housing using the 4 screws.

Standards

VDE 0660 T100, DIN EN 60947-1, IEC 60947-1

VDE 0660 T200, DIN EN 60947-5-1, IEC 60947-5-1

DIN EN 81-1, 81-2; 81-20

EU Conformity

acc. to directive 2014/35/EU

Notes

The degree of protection (IP code) specified applies solely to a property closed cover and the use of an equivalent cable gland with adequate cable.

The switch may not be used as a mechanical stop.