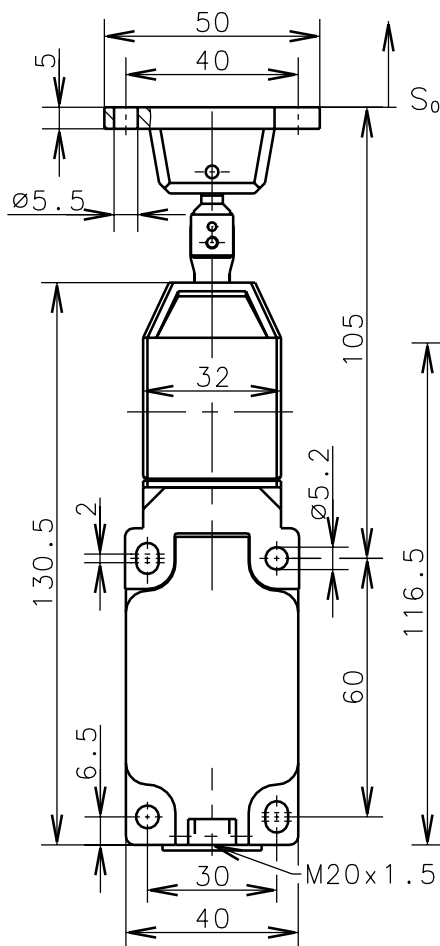
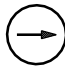
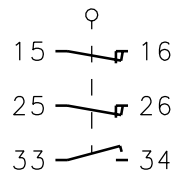
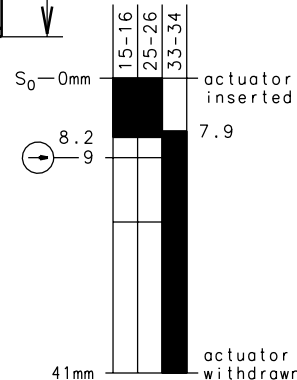


**Bernstein**Bernstein AG
Postfach 1164
D-32437 Porta Westfalica

Technical data sheet

ENK-UV15Z VTU-R

601.6669.155



 Positive opening operation according to DIN EN 60947-5-1 IEC 60947-5-1


Switching diagram

Switching symbol

Actuating force approx. 20N
Tolerance: actuating force $\pm 10\%$ **Mechanical features**

Enclosure:	Thermoplast, glass fibre reinforced
Cover:	Thermoplast, glass fibre reinforced
Actuator:	Separate actuator (St/PA), actuating head (PA6 GV/Zn-GD)

Ambient air temperature:	-30°C up to +80°C
Contact type:	2 NC-contacts, 1 NO-contact (Zb)

Mechanical life:	1×10^6 switch operations
Switch frequency:	max. 30/min
Mounting:	4 x M5
Connection type:	6 screw connections (M3)
Conductor cross-section:	single core $1 \times 0.5-1.5 \text{mm}^2$ / litz wire with connector sleeve $0.5-1.5 \text{mm}^2$
Cable entry size:	1 x M20x1.5
Weight:	approx. 0,3 kg

Electrical features

Max. Voltage:	400 V AC
Max. enduring current:	I_{the} 6A
Max. inrush current:	according to IEC 60947-5-1; AC 15, B300
Utilization categorie:	AC 15, B300 240V/1.5A
Standards:	according to EN 60947-1; EN 60947-5-1
Protection class (IP-Code):	IP65 according to EN 60529; DIN VDE 0470 T1
Short-circuit protection:	Fuse 6A gL/gG, IEC/EN 60947-5-1, appendix K

Remarks

Minimum actuating radius $R_{min} = 400 \text{mm}$; velocity for actuating $V_{max} = 0.5 \text{m/s}$.
Do not use this safety switch as a mechanical end stop.
Eight different actuating directions achievable by rotating the actuating head in steps 45°.
Changing between horizontal and vertical actuating direction by setting the actuating head in the requested direction.
The rated protection class (IP-Code) is valid only at closed cover and when using an at least equivalent cable gland.

Copies are not retreated in case of alternations.

Schutzvermerk nach DIN 34 beachten
Copyright reserved

11.10.2001