

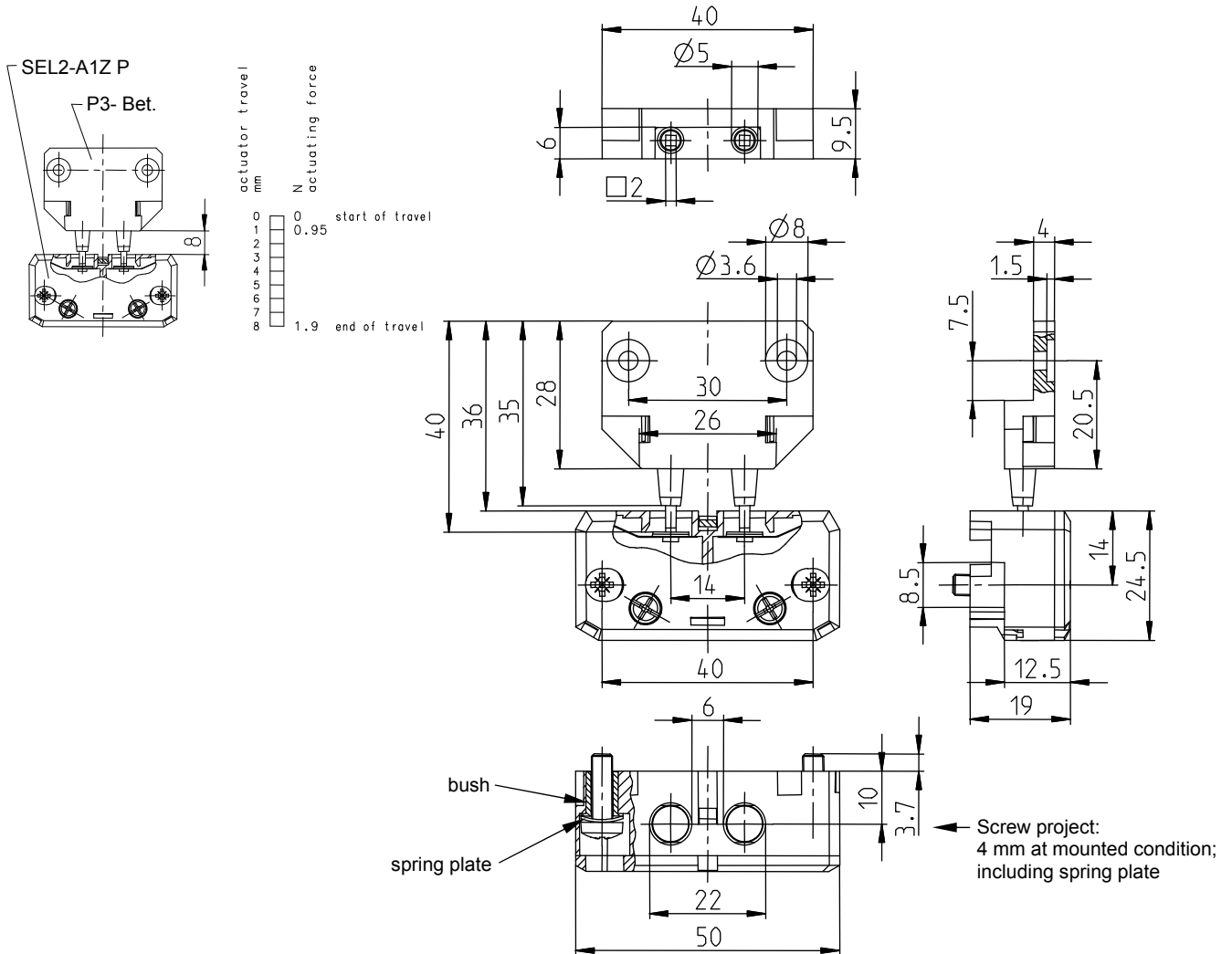
# Technical Data

## Safety switch

### Series SEL – with separate actuator

Description **SEL2-A1Z P3**

Article number **6016369110**



#### Electrical data

Conv. thermal current	$I_{the}$	4A
Rated operational voltage	$U_e$	230V AC; 200V DC (according to EN 81-1, -2)
Rated operational current	$I_e$	2A (according to EN 81-1, -2)
Short-circuit protective device		Fuse 6A gL

This document will not become the contractual basis; the details included herein do not constitute any descriptions of expected conditions, so that warranties/claims for defects on account of possible variations of the actual qualities from the qualities described herein are explicitly excluded. All rights reserved. Specifications subject to change without notice!

Date of issue: 20.02.2008 / Page 1 of 2  
Document : 6016369110\_en.doc / Last update: 3 / 2071-08

# Technical Data

## Safety switch

<b>Mechanical data</b>	
Enclosure	PC (UL 94-V0) red
Cover	PC (UL 94-V0) transparent
Actuator	Separate actuator (PA66 Ultramid A3X2G5)
Ambient air temperature	-30°C ... +70°C
Contact type	1 N.C.
Mechanical life	10 x 10 <sup>6</sup> switching cycles
Switching frequency	≤ 30 / min.
Assembly Safety switch	2 x M4 thread rolling captive screws according to DIN 7500
Actuator	2 x M4
Connection	2 screw connections (M3,5)
Conductor cross-sections	Solid: 0,5 ... 1,5mm <sup>2</sup> Litz wire with ferrules: 0,5 ... 1,5mm <sup>2</sup>
Weight	≈ 0,02kg
Installation position	Operator definable
Protection type	IP20 acc. to IEC/EN 60529
<b>Standards</b>	
	VDE 0660 T100, DIN EN 60947-1, IEC 60947-1
	VDE 0660 T200, DIN EN 60947-5-1, IEC 60947-5-1
	EN 81-1 and EN81-2
<b>EU Conformity</b>	
	<b>CE</b>
<b>Approvals</b>	
	TÜV AT1-TV-99/7
	cCSAus 2A, 230V AC, 60Hz, 1A, 200V DC
	ASME A17.5 CSA B44.1
<b>Notes</b>	

The centre of the misalignment between the P3 actuator and the switch add up to 3<sub>-0,4</sub> mm.  
Do not use switch as end stop.  
Door switch to be used in elevator doors.