

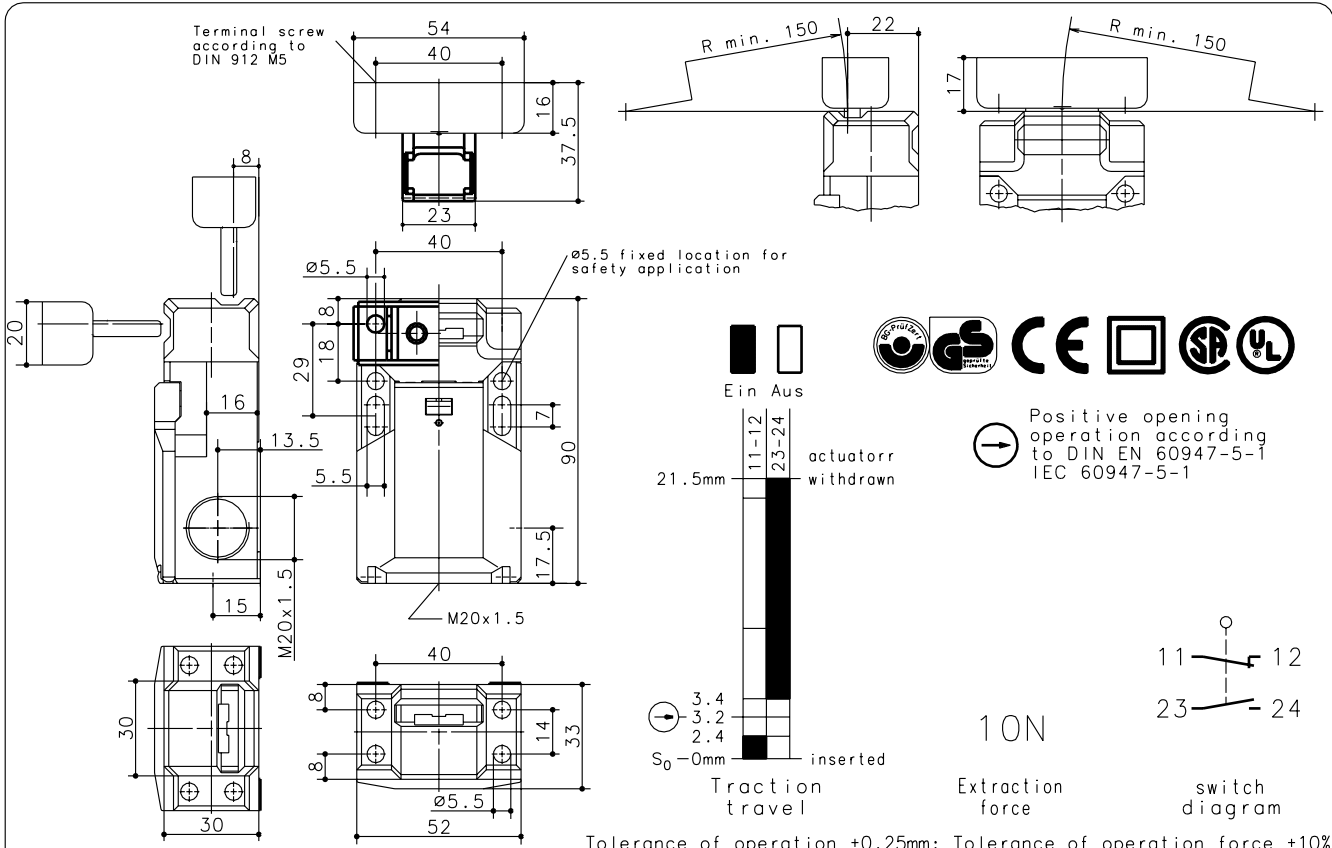


Bernstein AG
Postfach 1164
D-32437 Porta Westfalica

Technical data sheet

SK-U1Z PF

601.6119.074



Positive opening operation according to DIN EN 60947-5-1 IEC 60947-5-1

Schutzmerk nach DIN 34 beachten
Copyright reserved

11.03.02

Mechanical features

Enclosure: Thermoplast, glass fibre reinforced (UL94-V0)
Cover: Thermoplast, glass fibre reinforced (UL94-V0)
Actuator: separate actuator PA66 (UL94-V0)
Ambient air temperature: -30°C up to +80°C
Contact type: 1 NC-contact, 1 NO-contact (Zb)
Mechanical life: 1×10^6 switch operations
Switch frequency: 30/min
Mounting: enclosure 2xM5, actuator 2xM5
Connection type: 4 screw connections M3.5
Conductor cross-section: single core 0.5-1.5mm²/
litz wire with connector sleeve 0.5-1.5mm²

Cable entry size: 3 x M20x1.5

Weight: approx. 0,13kg

Mounting position: selectable

Protection class (IP-Code): IP65 accord. to EN 60529, DIN VDE 0470 T1

The rated protection class (IP-Code) is valid only at closed cover and when using an at least equivalent cable gland.

Electrical features

Rated insulation voltage: $U_i = 500V$ AC A300/ 150V DC R150
Conventional thermal current: $I_{th} = 10A$ AC/ 1A DC
Utilization categorie: AC-15 / DC-13
Short circuit protection: Fuse 10A gI/Gg, IEC/EN 60947-5-1, appendix K
CSA: 10A 300V AC, A300 (same pol.)

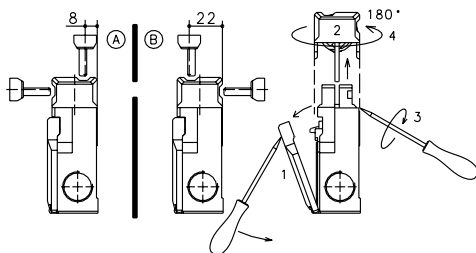
Approvals

CSA
UL
BG

Standards

VDE 0660 T100, EN 60947-1
VDE 0660 T200, EN 60947-5-1
IEC 60947-5-1
GS-ET 15

Approach possibilities



Specials / Remarks

- Turning the cap (pos A/B) allow 4 different directions of drive
- Cover (1) has to be opened before turning the cap (2).
- Insert the screwdriver into the gap between housing and cap and turn until the cap snaps off.
- Remove the cap, turn it 180° (4), latch it into the housing and close the cover.
- Radial actuation may reduce the mechanical life.
- The min. radius refers to a pivot at the top of the cap.
- Unused actuator entry slot must be covered by the plug.
- Do not use the switch as end stop.