

Technical Data

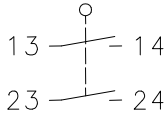
Plastic bodied limit switch

Series C2

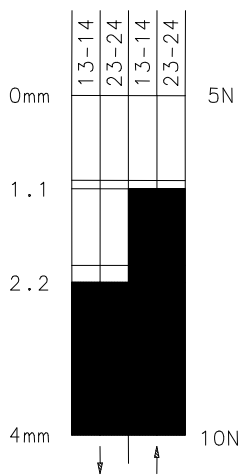
Description **C2-SE2 ST**

Article number **6008854030**

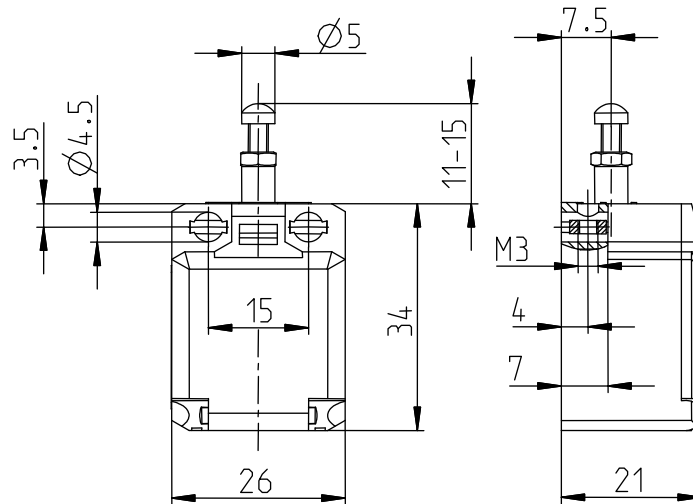
Operating symbol



Operating diagram



On
 Off
 Tolerance:
 Operating point $\pm 0,25$ mm;
 Actuating force: ± 10 %



Electrical data

| | | |
|---------------------------------|-----------|------------------------------|
| Rated insulation voltage | U_i | 250 V AC |
| Conv. thermal current | I_{the} | 10 A |
| Rated operational voltage | U_e | 240 V |
| Utilization category | | AC-15, U_e/I_e 240 V / 3 A |
| Short-circuit protective device | | Fuse 6 A gG |
| Protection class | | II, totally insulated |

This document will not become the contractual basis; the details included herein do not constitute any descriptions of expected conditions, so that warranties/claims for defects on account of possible variations of the actual qualities from the qualities described herein are explicitly excluded. All rights reserved. Specifications subject to change without notice!

Date of issue: 29.07.2008 / Page 1 of 2
 Document : 6008854030_en.doc / Last update: 2 / 2234-08

Technical Data

Plastic bodied limit switch

| Mechanical data | |
|--------------------------|--|
| Enclosure | Thermoplastic, glass fibre reinforced (UL 94-V0) |
| Cover | Thermoplastic (UL 94-V0) |
| Actuator | Adjusting screw adjustable, thread M3 with a lock nut |
| Ambient air temperature | -30 °C/+80 °C |
| Contact type | 1 NO (Zb) |
| Mechanical life | 3 x 10 ⁶ switching cycles |
| Switching frequency | ≤ 100/min |
| Assembly | 2 x M3 |
| Connection | 4 screw connections (M3,5) |
| Conductor cross-sections | Solid: 0,5 - 1,5 mm ² Litz wire with ferrules: 0,5 - 1,5 mm ² |
| Cable entrance | Rectangle 8,5 x 3,5 mm |
| Weight | ≈ 0,02 kg |
| Installation position | operator definable |
| Protection type | IP20 acc. to EN 60529; DIN VDE 0470 T1 IP30 will be reached when all contacts are connected with outer wire diameter ≥ 2,2 mm. |

Actuation

The push bolt actuator is mainly intended to be actuated along its axis.
Side actuation will considerably reduce switch life.
The switch may not be used as a mechanical stop.

Standards

VDE 0660 T100, DIN EN 60947-1, IEC 60947-1
VDE 0660 T200, DIN EN 60947-5-1, IEC 60947-5-1

EU Conformity

CE

Approvals

cCSA_{US}, UL

Notes

The specified protection classification (IP code) applies only when the cover is closed.