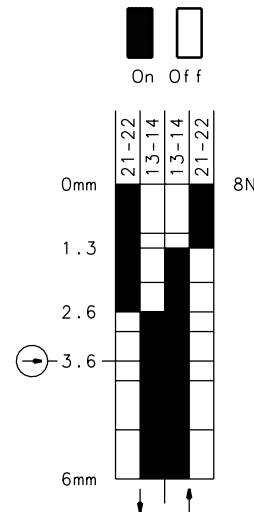
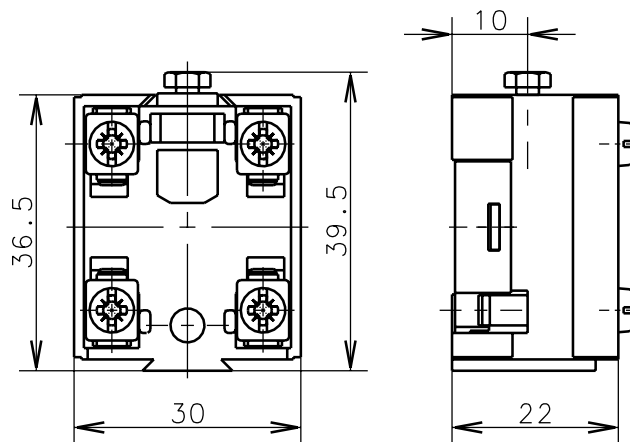
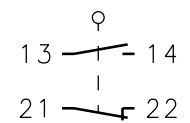


**Bernstein**Bernstein AG
Postfach 1164
D-32437 Porta Westfalica

Technical data sheet

C74-SU1Z

600.6351.079

Positive opening
operation according
to DIN EN 60947-5-1
IEC 60947-5-1Switching
diagramSwitching
symbolTolerance: operating point $\pm 0.25\text{mm}$; actuating force $\pm 10\%$ **Mechanical features**

Enclosure: Thermoplast, glass fibre reinforced

Cover:

Actuator: Plunger

Ambient air temperature: -30°C up to $+80^\circ\text{C}$

Contact type: 1 NC-contact, 1 NO-contact (Zb)

Mechanical life: 10×10^6 switch operations

Switch frequency: max. 100/min

Mounting: 2 x M3

Connection type: 4 screw connections (M3.5)

Weight: approx. 0,03kg

Electrical features

Max. voltage: 500 V AC

Max. enduring current: 1 th 10A

Max. inrush current: according to IEC 947-5-1, AC 15, DC 13

Standards: according to EN 60947-1; EN 60947-5-1

Protection class: IP00 according to EN 60529; DIN VDE 0470 T1

Short-circuit protection: Fuse 2A gL/gG, IEC/EN 60947-5-1, appendix K

Approach possibilities

Actuating the device is possible only in direction of the plunger.

Remarks

Because of the open construction of the device there is no special protection against ingessing of water and touching parts under voltage.