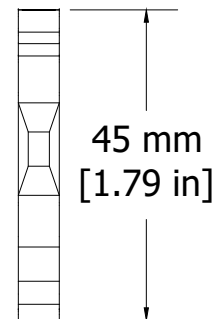
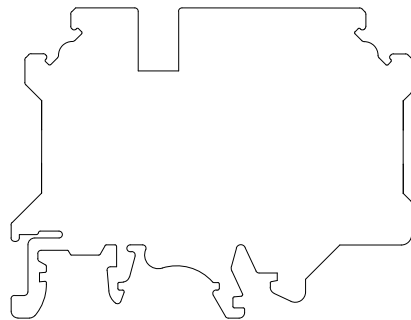
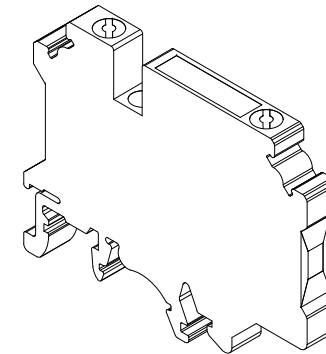
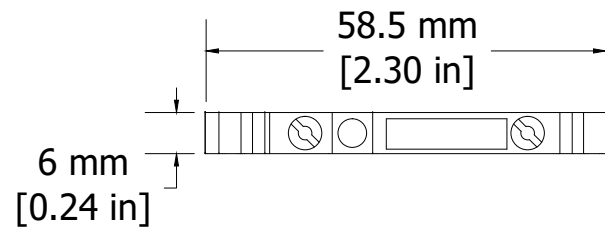


REVISIONS FOR DWG # CKT4SP

| REV | CH.NO. | DESCRIPTION | DATE | REVISED BY |
|-----|--------|-----------------|----------|------------|
| — | — | ORIGINAL DESIGN | 05/30/17 | ARON G |



Dimensions & Weight

| | | Knife Style Disconnect Same profile as CF4SP Fuse Block | |
|-------------------|-------------|--|--|
| Width | | 6 mm | |
| Length | | 58.5 mm | |
| Height w DIN Rail | 35 x 7.5 mm | 46.0 mm | |
| | 35 x 15 mm | 53.5 mm | |
| Weight per piece | | 27.2 g | |

- UNLESS OTHERWISE SPECIFIED
- ALL DIMENSIONS ARE IN MILLIMETERS
 - THIRD ANGLE PROJECTION

| • TOLERANCE | |
|-------------|-----------|
| XX | ± 1.00 mm |
| XX.X | ± 0.50 mm |
| XX.XX | ± 0.20 mm |
| ALL | ± XX mm |

ITEM

This Drawing is the property of

Altech Corp.

35 Royal Road
Flemington NJ 08822-6000
(908) 806-9400 • Fax (908) 806-9490

AND IS A CONFIDENTIAL DISCLOSURE
LENT WITHOUT CONSIDERATION OTHER
THAN THE BORROWER'S AGREEMENT
THAT IT SHALL NOT BE REPRODUCED,
COPIED, LENT, OR DISPOSED OF
DIRECTLY OR INDIRECTLY NOR USED
FOR ANY PURPOSE OTHER THAN THAT
FOR WHICH IT IS SPECIFICALLY
FURNISHED.

TITLE: Disconnect and Test Terminal Block
CKT4SP

| | | | |
|-----------------------------|----------|----------------------------------|----------------|
| DRAWN BY: Aron Gyorgypal | 05/30/17 | DRAWING NO.: M-Cad-2dr-CKT4SP | REV.: — |
| CHECKED BY: Laszlo G | 05/30/17 | | |
| RELEASED BY: Laszlo G | 05/30/17 | SCALE: — | SHEET: 1 OF: 1 |